

How to make a successful jobsite in surface dressings

Croatian Emulsion Day

Yvon GERBEL, international technical director, the 22th of September 2015

- The right binder quality
- The right aggregates quality
- The right spraying conditions
- The right logistic on jobsite
- The right equipment
- The right team on jobsite



Surface dressings

The 3 steps for a good surface dressings

Cleaning



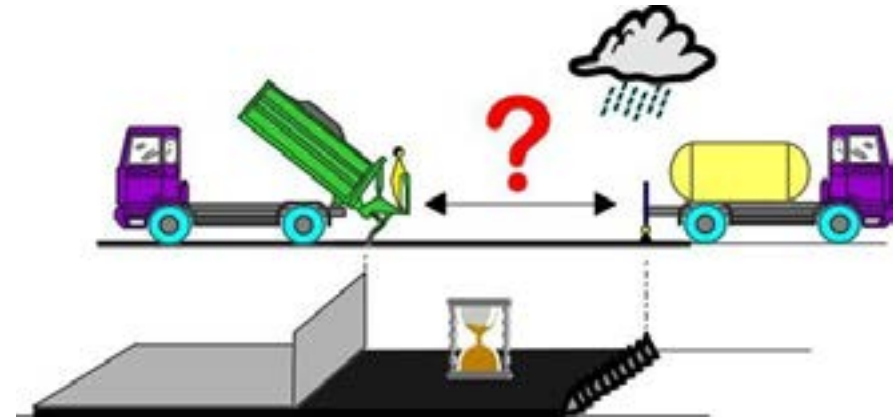
Spraying
/Spreading



Compaction



- Distance and time between binder sprayer and chipsreader
- Good weather conditions
- Right binder temperature
- Right ground temperature
- Right dosing selection



Binder and aggregates application

- Aggregates and binder stock area close to the jobsite
- Well-adapted equipments for loading



Aggregates loading



Bitumen loading

- Good training for team
 - ▶ Training on machine
 - ▶ Training about technology
- Surface dressings is a complex product
 - ▶ EN 12271
- Jobsite organisation is a key success
 - ▶ For technical success
 - ▶ For profitability success



How to choose the right machine ?

The range of machine and main specifications

The traditionnal way

- Binder sprayer
- Chipsreader



EDENSPRAYER



ARENA 320

■ The 5 keys

- ▶ Binder type
- ▶ Capacity
- ▶ Dosing quality
- ▶ Spraybar type and width
- ▶ Heating system



EDENSPRAYER

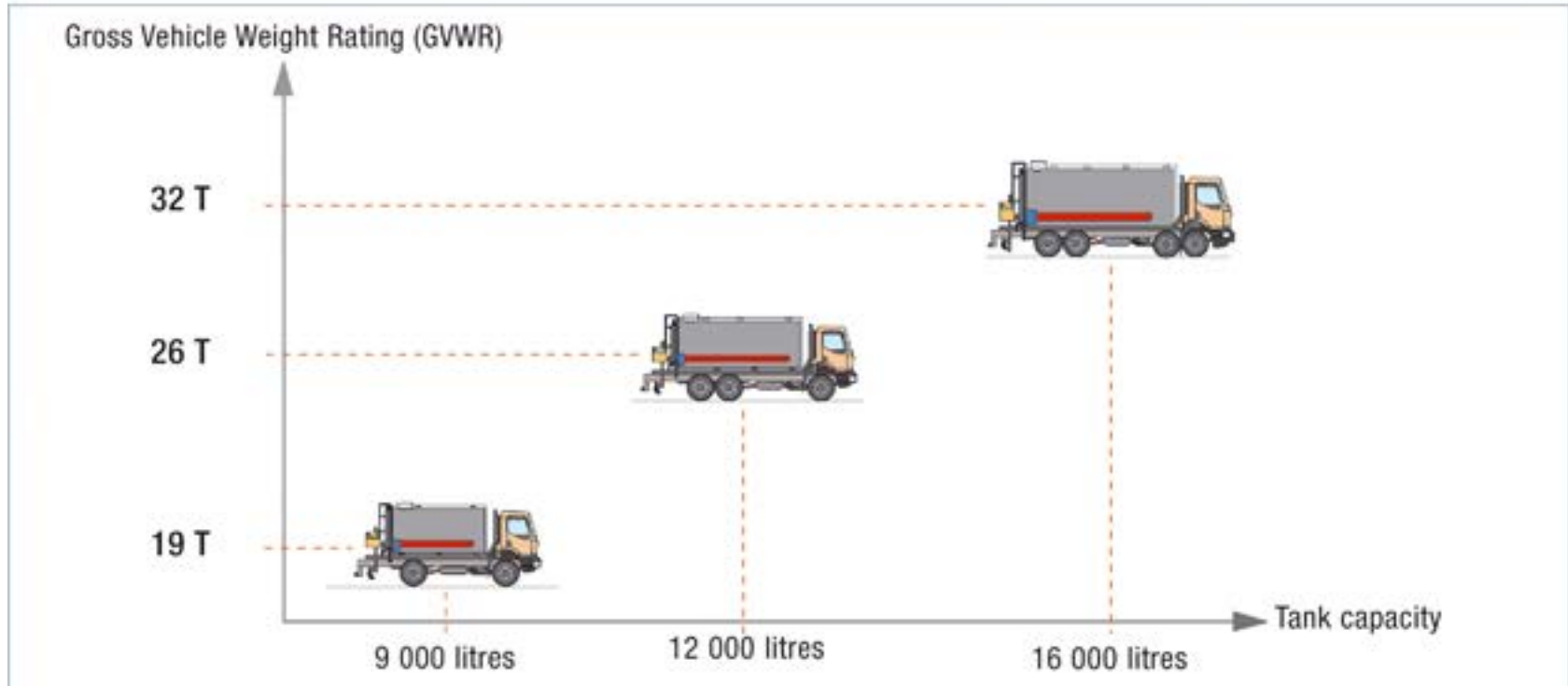
- Emulsion: standard machine without special regulation
- Hot bitumen: ADR standard



Emulsion



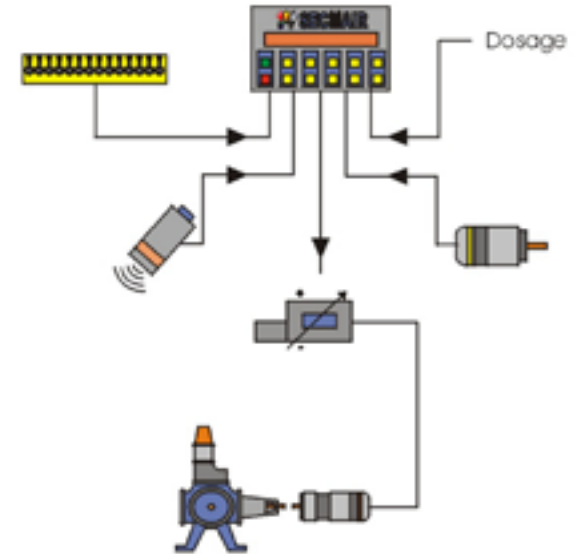
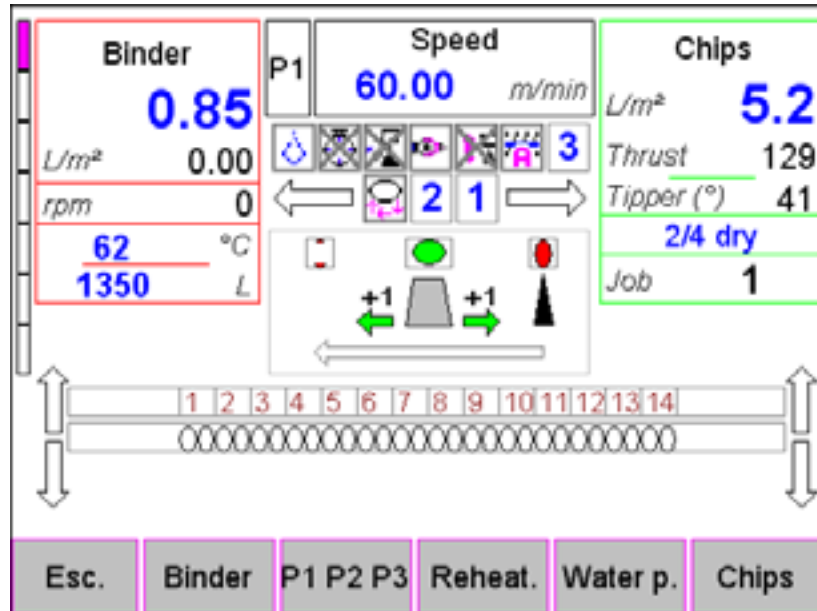
Hot bitumen



Principle of dosing computer

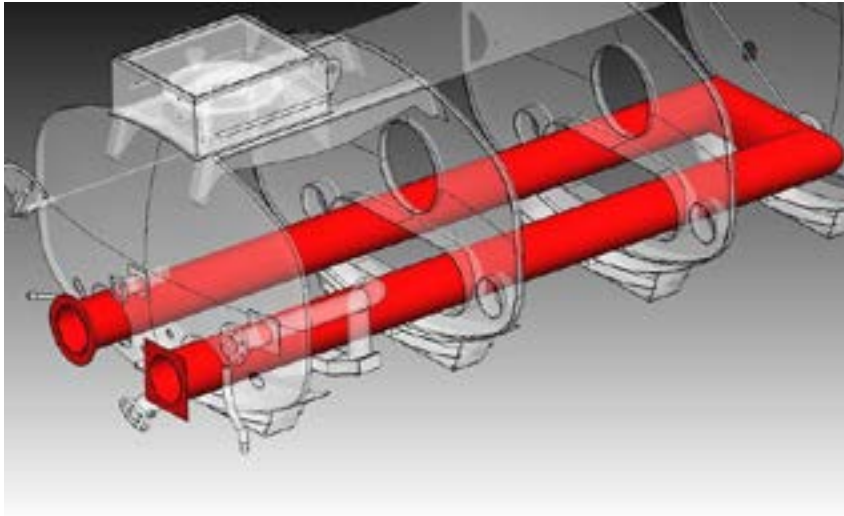
- Dosing selected on computer
 - Truck speed
 - Spraying width
- =

- Right binder quantity on ground

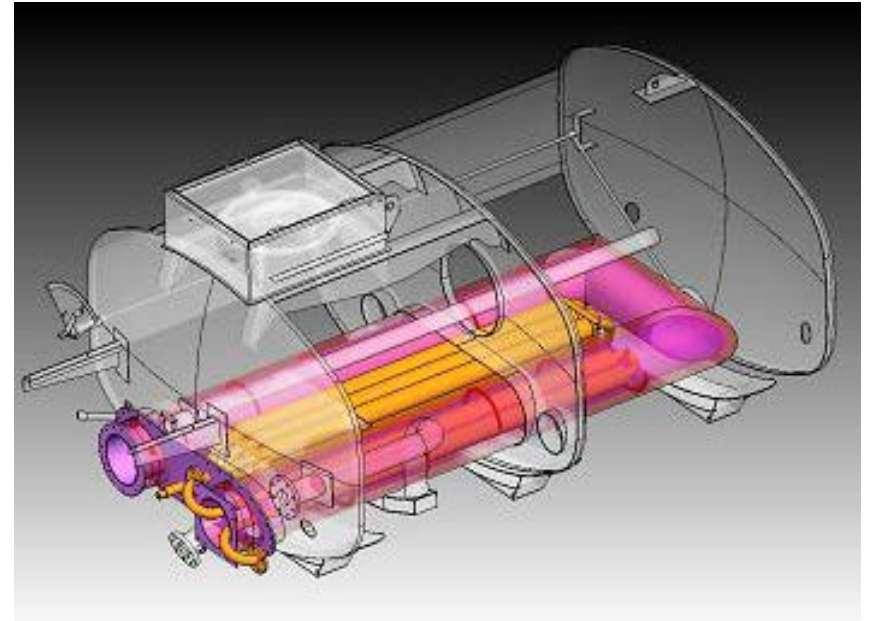


How to heat the binder ?

- Indirect Vs direct heating
- Principle and choice



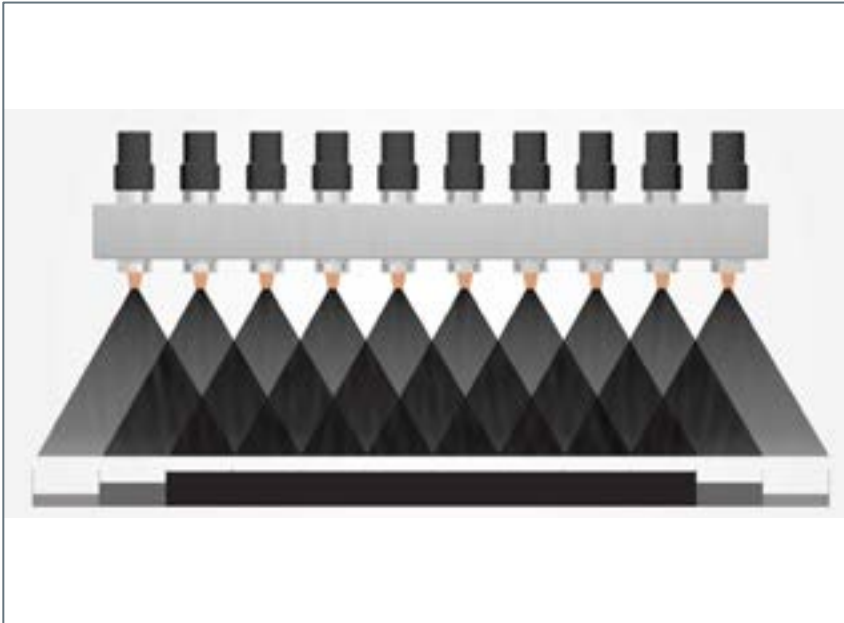
Direct heating



Indirect heating

How to choose a spraybar ?

- Distance between 2 nozzles: 100 mm
- Angle and nozzle size
- Telescopic or foldable



Three overlaps



Telescopic spraybar 6.2 meters width

■ 3 questions

- ▶ Chipsreader on tipper truck or self propelled
- ▶ Chipsreader with or without hydraulic roller
- ▶ Chipsreader with or without computer



CHIPSREADER

- Self-propelled: higher productivity
- On tipper truck: better versatility



Self propelled chipsreader



Chipsreader on tipper truck

To go further.....

Patching is a small surface dressings

■ Sprayer-spreader

- ▶ Complementary machine on traditional surface dressings jobs
- ▶ Accurate patching machine
- ▶ Versatile machine



CHIPSEALER

Thanks

